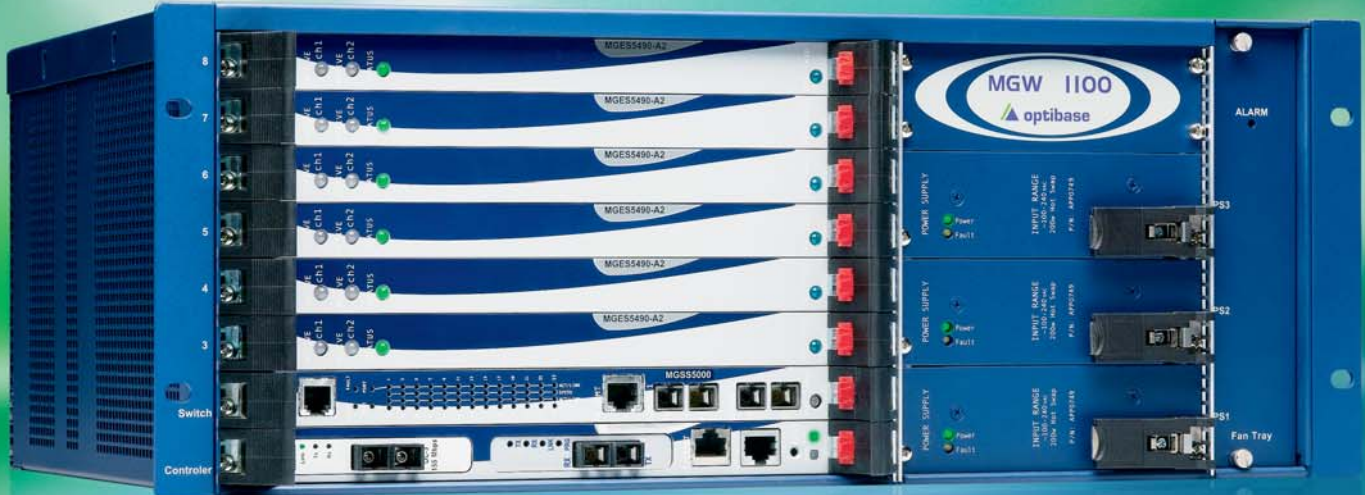




Integrated Carrier Grade  
TV Streaming Platform

# MGW 1100



# MGW



## For TV over IP Broadcast Services

The MGW 1100, an integrated carrier grade TV streaming platform, enables small- to medium-sized TV over IP or ATM broadcast services, such as those required by Telcos and Service Providers, for applications like regional head-end or MDU (Multi Dwelling Units) TV streaming. MGW 1100 provides encoding, transcoding, transrating (rate shaping) and recasting at the edge of service providers' TV distribution network or at MDU access points, and offers low cost real-time TV streaming services for service providers.

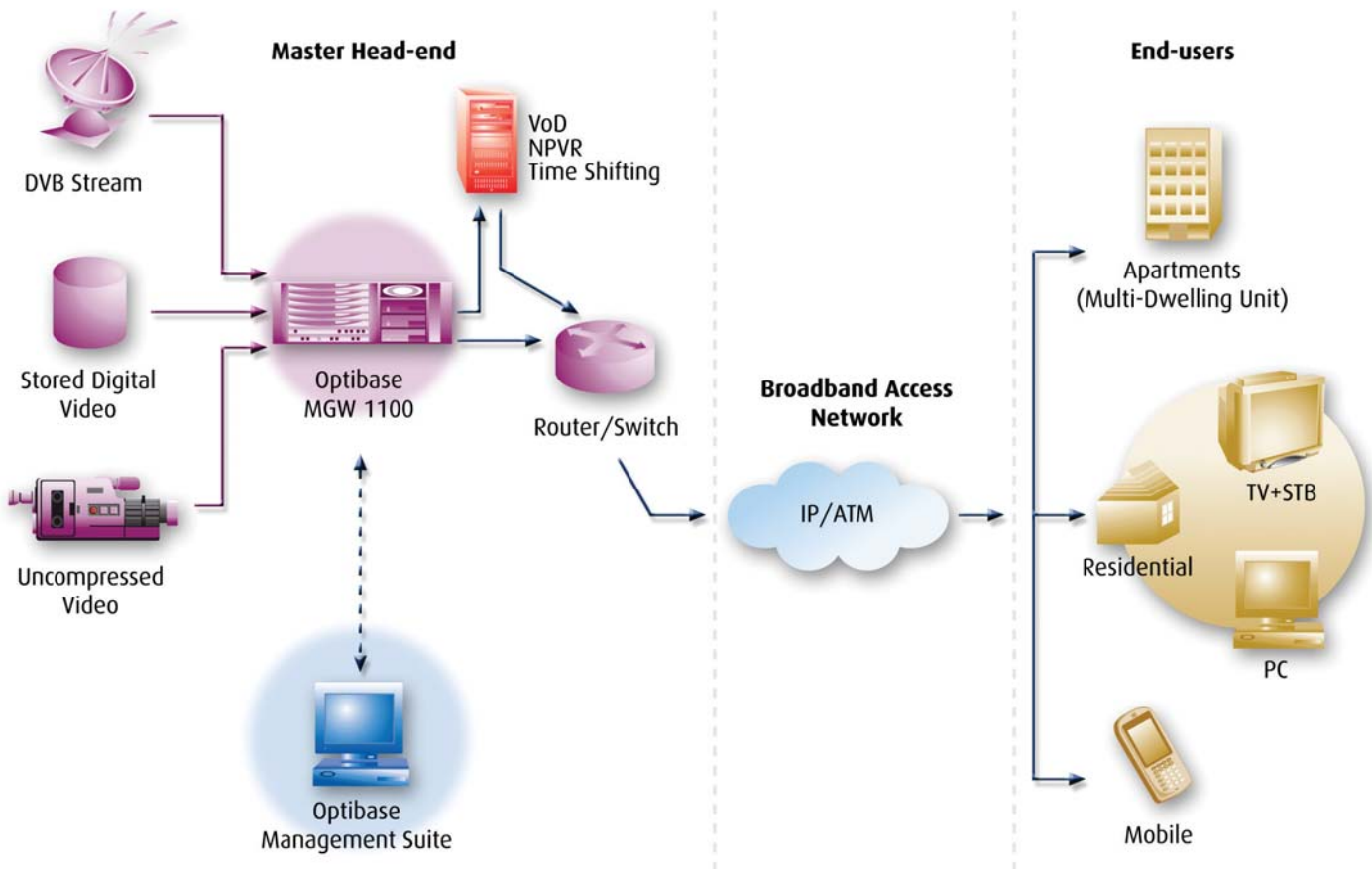
With its advanced video processing and streaming functionalities, the MGW 1100 can support over 100 video and audio channels concurrently. It is an ideal solution for providers who intend to stream a relatively small number of channels. Optibase's suite of management solutions complements the MGW 1100 and offers sophisticated capabilities that allow you to control and monitor your IP/ATM video from a central SNMP-based interface.

# 1100



## Main Benefits

- **Carrier Grade Architecture:** By supporting N + K redundancy and hot swap capabilities, MGW 1100 offers high availability, reliability and robustness.
- **Modularity:** MGW 1100's modular design allows the installation of up to six service boards at a time, for media processing.
- **Full Service Range:** MGW 1100 is a complete solution for streaming media, with a single box offering live video encoding, transcoding, transrating (rate shaping) and streaming over IP or ATM networks.
- **Central SNMP Management:** An advanced and flexible SNMP-based management application enables smooth integration into a centrally managed networking facility.
- **Flexibility:** By combining I/O boards, service boards and network interface cards (NIC) in a single chassis, operators can optimize their range of service while minimizing risk.
- **Lower Operational Expenditure (OPEX):** With this integrated solution you'll need fewer boxes resulting in a smaller footprint, minimal inventory, less training and one management system.
- **Smooth Migration Options:** A standard reliable platform facilitates smooth expansion using off-the-shelf hardware.



## Main Features

- Transcodes DVB MPEG-2 sources to all formats: MPEG-1 / MPEG-2 / MPEG-4 AVC (H.264) and Windows Media Technology.
- Streams up to 12 concurrent encoded or transcoded TV channels, and up to 30 transrated (rate shaping) channels.
- Encodes high-quality MPEG-1, MPEG-2, MPEG-4 AVC (H.264) and Windows Media (VC1) Technology.
- Transrates DVB MPEG-2 sources to lower bit rates.
- Converts MPEG-2 over DVB-ASI to MPEG-2 over IP/ATM (DTA).
- Supports Unicast, Multicast and Multi-unicast outputs.
- Supports IP over Gigabit/100BT Ethernet, routed and bridged IP over ATM (IPoA) and native ATM (OC-3/ STM-1) interfaces.
- Supports real-time upload to standard video servers.
- Supports integrated Windows Media Server.
- Carrier grade cPSB 2.16 platform with hot-swap, hot-insertion of all removable components and VxWorks real-time operating system.

## Applications

- TV broadcast over IP or ATM broadband networks, for regional head-end, MDU/MTU, or small-scale service provider deployments
- Video upload for VOD, nPVR and time shifted applications
- DVB-H
- High-end video surveillance
- Hospitality solutions

## Chassis Description

MGW 1100 consists of a standard 4U cPSB 2.16 chassis with 8 slots at the front and rear.

Each slot is individually connected by its own bus, forming a star topology, which is unique in the market.

The entire platform is based on internal IP architecture. The front slots house service boards that perform processing operations such as encoding, while the rear slots house video I/O boards.

This hosting structure offers high flexibility and efficiency by allowing service providers to optimize the mix of service and I/O boards according to their solution needs.

The MGW 1100 chassis and management application offer redundancy for power supplies, fans and service boards.

# 1100

## For Surveillance and Hospitality Solutions

MGW 1100's winning combination of full service range in a single box and reliability is ideal for enterprises that want to deploy high-end video surveillance systems and hospitality solutions. MGW 1100 offers all the features of a sophisticated carrier-grade video streaming platform, in a compact easy-to-deploy rack-mount chassis giving enterprises and organizations the best of both worlds: cost-effectiveness together with top video quality, availability and flexibility.

### Surveillance

For video surveillance, where reliability, availability and robustness are critical factors,

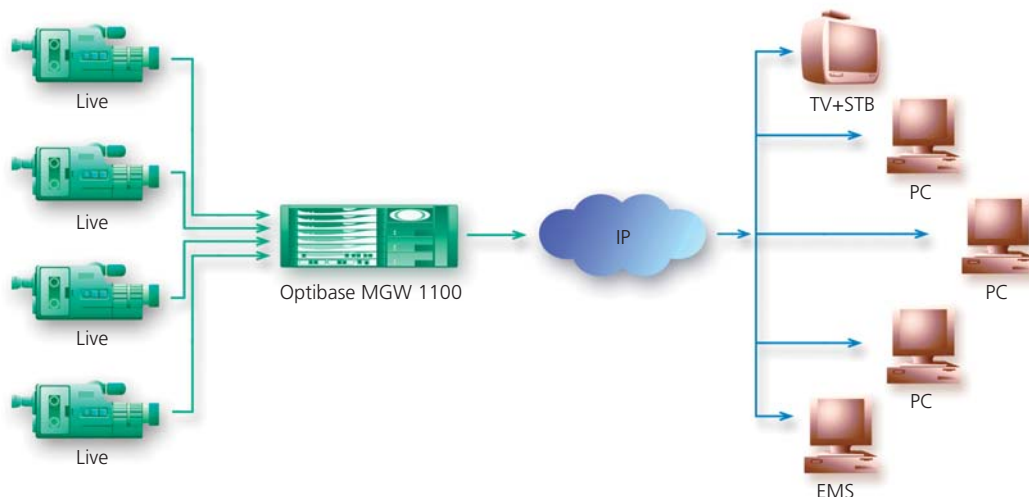
MGW 1100 fits the bill by offering a unique formula of carrier grade features, small footprint, cost effectiveness and top quality video streamed in several formats.

### Hospitality

For hospitality solutions, hotels, hospitals and cruise ships can take advantage of MGW 1100's live and on-demand streaming capabilities, DVD quality video and multi-channel support to set up a sleek mini-video head-end on their premises. And MGW 1100's modular and scalable design lets you take a gradual approach to setting up your streaming solution, without compromising on quality.

### Surveillance

#### Remote Sites



# MGW 1100



## Technical Specifications

### Available Service and I/O Modules

- MGES5200 - dual channel MPEG-1 and MPEG-2 encoder
- MGES5400 - dual channel MPEG-4 / Windows Media to the desktop encoder
- MGES5610 - dual channel MPEG-4 AVC (H.264) / VC1 encoder
- MGCS5400 - Windows Media Server (within the MGW 1100 platform)
- MGTI5200 - dual channel Transcoder (MPEG-2 to any other format conversion)
- MGTR5200 - Transrater with 4 ASI inputs (MPEG-2 rate shaping)

### Output Interfaces

- Gigabit Ethernet Multi-Mode Fiber
- 10/ 100BaseT Ethernet
- ATM OC3/ STM1

### Management

- Interfaces: SNMP, XML, Telnet, RS-232
- Element Manager: Multi-Operation Systems (OS) application with user-friendly GUI
- Cluster Manager: Multi-client-server application that controls and monitors clusters of media gateways

### Physical

- Width: 19", 48cm (width of 21 cPSB slots)
- Height: 4RU
- Depth: 12", 30cm

### Electrical Characteristics

- Input power: 90-240VAC or 36-72VDC
- Redundant Power Supplies
- Max Power Consumption 300W

### Environmental

- Operating Temperature: +41°F to +104°F, +5°C to +40°C
- Storage Temperature: -40°F to +158°F, -40°C to +70°C

### Safety and EMC

- Safety: CE- LVD : CE Mark per EN60950 (ITE)
- EMC: CE- EMC Class A, FCC Class A, CSA Class A

### Environmental Standards

- ETS 300 019-1-0

#### Corporate Headquarters

7 Shenkar Street  
Herzliya 46120, Israel  
Tel: +972-9-970-9288  
Fax: +972-9-958-6099

#### North America Headquarters

1250 Space Park Way  
Mountain View  
CA 94043, USA  
Tel: +1-800-451-5101  
+1-650-230-2400  
Fax: +1-650-691-9998

info@optibase.com  
www.optibase.com

www.optibase.com

